



**TEST REPORT**  
**ON**  
**0.4 TO 3 GHz**  
**SINGLE POLE SINGLE THROW**  
**HIGH SPEED PIN DIODE SWITCH**

**AMC MODEL No:**  
**SW-2184-1**  
**OPTION 043, HS**

**Serial Numbers: 1MS907247 AND 1MS907248**

**DESIGNED**  
**BY**  
**Dr. A. Gorwara**

**TESTED**  
**BY**  
**C. Wendland**

**REPORTED**  
**BY**  
**E. Elder**

**October 20, 2004**

**AMERICAN MICROWAVE CORPORATION., 7311-G Grove Road, Frederick, MD 21704**  
**Tel: 301-662-4700 • Fax: 301-662-4938 • Email: [sales@americanmicrowavecorp.com](mailto:sales@americanmicrowavecorp.com)**  
**Website: <http://www.americanmicrowavecorp.com>**

**ISO9001 : 2000 CERTIFIED**

*ESC*  
*JW*  
*DRH*  
*AK*  
*14*  
*10/20/04*

## TABLE OF CONTENTS

●	PRODUCT DESCRIPTION AND ELECTRICAL SPECIFICATIONS	PAGE 3
●	PRODUCT FEATURE AND ENVIRONMENTAL SPECIFICATIONS	PAGE 4
●	MECHANICAL OUTLINE	PAGE 5
●	FUNCTIONAL SCHEMATIC	PAGE 6
●	TEST DATA ON SW-2184-1 OPTIONS 043, HS SERIAL NUMBERS 1MS907247 AND 1MS907248	PAGE 7
●	TEST DATA ON SW-2184-1 OPTIONS 043, HS SERIAL NUMBERS 1MS907247	PAGE 8
●	TEST DATA ON SW-2184-1 OPTIONS 043, HS SERIAL NUMBERS 1MS907248	PAGE 9

## SINGLE POLE SINGLE THROW PIN DIODE SWITCH MODULE AMC MODEL No: SW-2184-1 OPT 043, HS

### FEATURES:

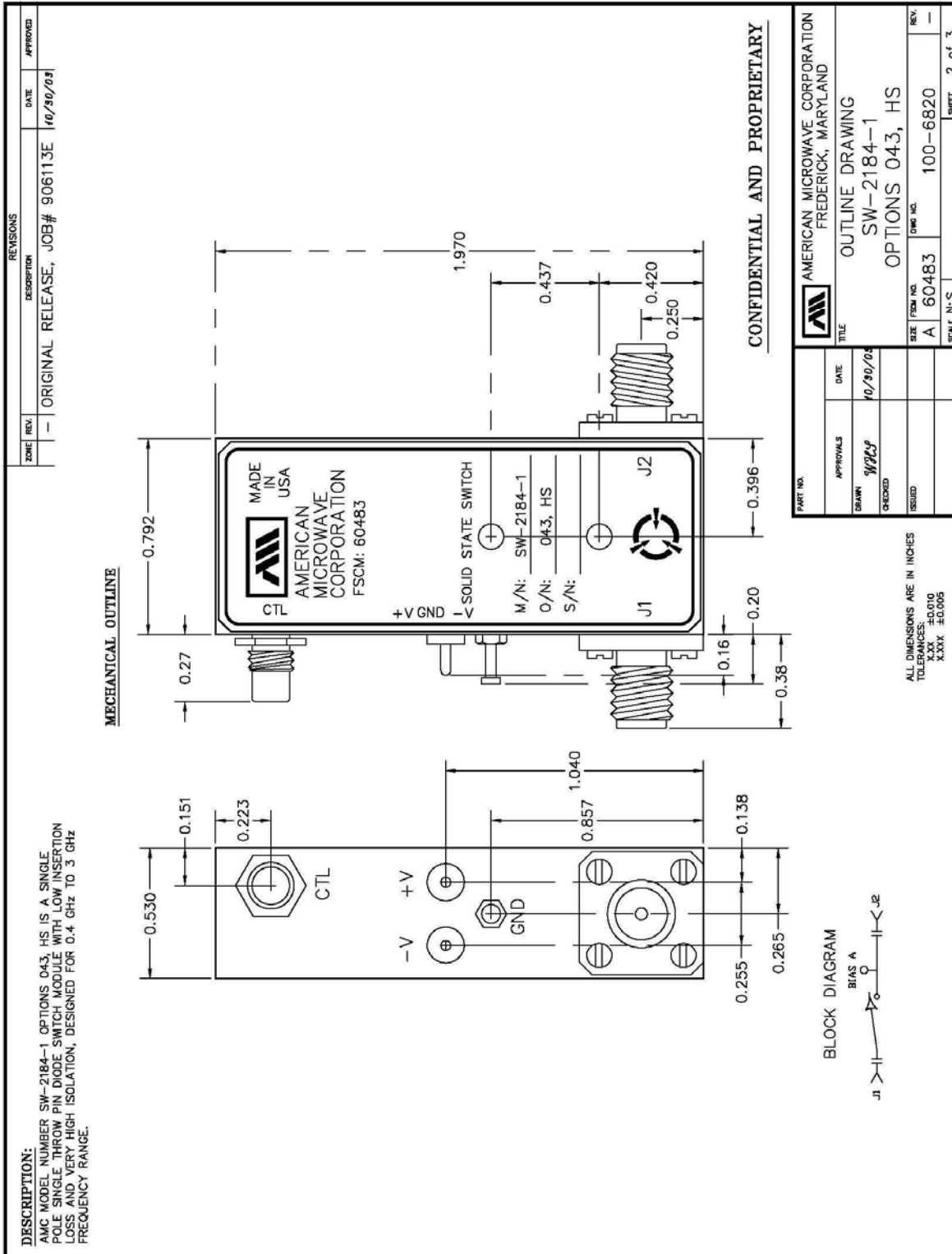
- **0.4 TO 3 GHz FREQUENCY RANGE**
- **LOW INSERTION LOSS**
- **VERY HIGH ISOLATION**
- **HIGH SPEED**

### SPECIFICATIONS:

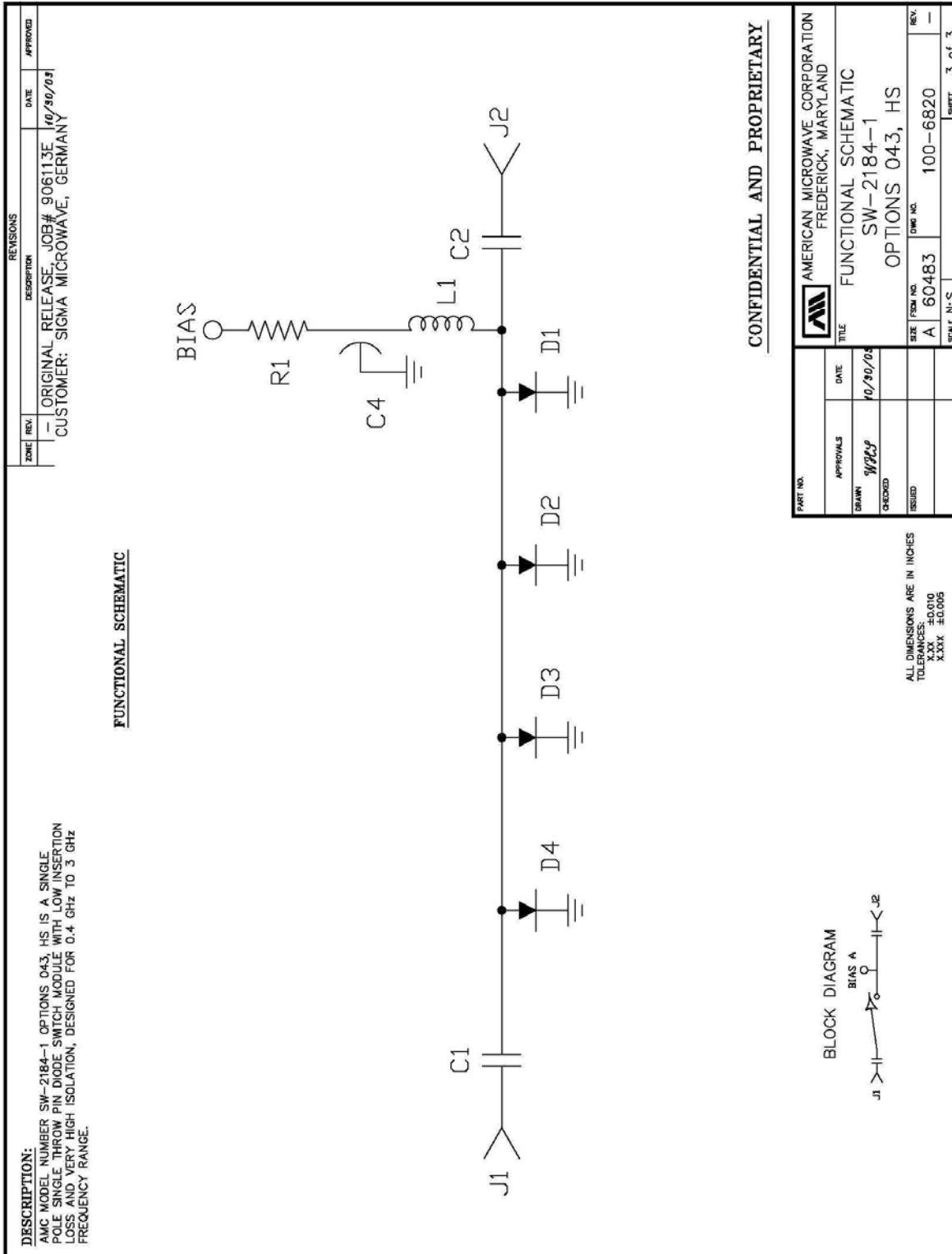
- FREQUENCY : 0.4 TO 3 GHz
- INSERTION LOSS : 0.4 TO 2 GHz: 1.0 dB MAXIMUM  
: 2 TO 3 GHz: 1.2 dB MAXIMUM
- ISOLATION : 0.4 TO 1 GHz: 45 dB MINIMUM  
: 1 TO 2 GHz: 70 dB MINIMUM  
: 2 TO 3 GHz: 85 dB MINIMUM
- VSWR : 1.4:1
- SPEED : RISE TIME: 10 nSEC MAXIMUM  
: FALL TIME: 10 nSEC MAXIMUM
- RF CONNECTORS : SMA FEMALE
- CONTROL : PATH "ON" -10 VDC  
: PATH "OFF" +35 mA
- WEIGHT : 1.5 OUNCES TYPICAL



**OUTLINE DRAWING**



**FUNCTIONAL SCHEMATIC**



## FINAL TEST DATA

FINAL TEST DATA SHEETS

FOR

AMC MODEL NUMBER

**SW-2184-1**  
**OPTION 043, HS**

Serial Numbers:

**1MS907247 AND 1MS907248**





